

BT-NG-020621-545-0144

Bramford to Twinstead Reinforcement

Volume 8: Examination Submissions

Document 8.3.6.4 (B): Draft Statement of Common Ground East Anglia
Three Limited

Final Issue B
December 2023

Planning Inspectorate Reference: EN020002

The Infrastructure Planning (Examination Procedure) Rules 2010
Regulation 8(1)(e)

Page intentionally blank

<u>Version History</u>			
<u>Date</u>	<u>Issue</u>	<u>Status</u>	<u>Description / Changes</u>
<u>25 September 2023</u>	<u>A</u>	<u>Final</u>	<p><u>Deadline 1 SoCG. The subject of this SoCG was previously contained in the Draft Statement of Common Ground TC East Anglia One OFTO Limited and East Anglia Three Limited [APP-174].</u></p> <p><u>However, the transmission assets of the East Anglia One Windfarm were subsequently transferred to TC East Anglia One OFTO Limited, who are now the Transmission Licence holder for these assets. Since the divestment of East Anglia One from Scottish Power Renewables (SPR), the Applicant has been engaging with the new licence holder. Meanwhile, the East Anglia Three project remains wholly owned by SPR.</u></p> <p><u>As such, the submission SoCG [APP-174] has been split into two separate SoCG to reflect the two discrete projects and Licence holders.</u></p>
<u>1 December 2023</u>	<u>B</u>	<u>Final</u>	<p><u>An updated SoCG has been provided at Deadline 5. This SoCG reflects the latest position with East Anglia Three Limited, which since the Deadline 1 SoCG, the Applicant has issued Heads of Terms in respect to an Interface Agreement to manage the parties respective projects.</u></p>

Contents

1.	Introduction	1
1.2	Description of the Project	1
1.3	Project Programme	2
1.4	This Statement of Common Ground	3
2.	Record of Engagement	4
2.1	Role of the Consultee in the Process	4
2.2	East Anglia Three	4
2.3	Project Interface	5
2.4	Summary of Pre-Application Discussions	6
2.5	Summary of Post-Submission Discussions	7
3.	Matters Agreed	8
4.	Matters Not Agreed	9
5.	Matters Under Discussion	10
6.	Approvals	11
	Reference List	12

Table 2.1 – Pre-application discussions	6
Table 2.2 – Post-submission discussions	7
Table 4.1 – Matters not agreed	9
Table 5.1 – Matters under discussion	10

1. Introduction

- 1.1.1 A Statement of Common Ground (SoCG) is a written statement produced as part of the application for development consent and is prepared jointly between the applicant and another party. It sets out matters of agreement between both parties, as well as matters where there is not an agreement. It also details matters that are under discussion.
- 1.1.2 The aim of a SoCG is to help the Examining Authority manage the examination phase of the application. Understanding the status of the matters at hand will allow the Examining Authority to focus their questioning, and provide greater predictability for all participants in examination. A SoCG may be submitted prior to the start of or during examination, and then updated as necessary or as requested during the examination phase.
- 1.1.3 This SoCG is between National Grid ([the Applicant](#)) and East Anglia Three Limited ([the Consultee](#)) relating to the application for development consent for the Bramford to Twinstead reinforcement ('the project'). This SoCG has been prepared in accordance with the guidance for the examination of applications for development consent for Nationally Significant Infrastructure Projects (NSIP) (Planning Act 2008) published by the Department of Communities and Local Government (Department for Communities and Local Government, 2015).
- 1.1.4 This SoCG has been prepared to identify matters agreed and matters currently outstanding between National Grid and East Anglia Three Limited in respect to the Bramford to Twinstead reinforcement and the East Anglia Three project only. The SoCG will evolve as the application progresses through examination.
- 1.1.5 The subject of this SoCG was previously contained as part of the Development Consent Order (DCO) submission in the Draft Statement of Common Ground TC East Anglia One OFTO Limited and East Anglia Three Limited [APP-174], as Scottish Power Renewables (SPR) owned both projects. However, the transmission assets of the East Anglia One Windfarm were subsequently transferred to TC East Anglia One OFTO Limited, who are now the Transmission Licence holder for these assets.
- 1.1.6 Since the divestment of East Anglia One from SPR, National Grid has been engaging with the new licence holder and as such, this SoCG relates to East Anglia Three only and a separate SoCG is being progressed with TC East Anglia One OFTO Limited. The East Anglia Three project remains wholly owned by SPR.
- 1.1.7 Both the separate/-standalone SoCG, [which were](#) provided at Examination Deadline 1, ~~and~~ [supersedes](#) the version submitted in April 2023 at application stage (Draft Statement of Common Ground TC East Anglia One OFTO Limited and East Anglia Three Limited [APP-174]).

1.2 Description of the Project

- 1.2.1 ~~This document supports National Grid's~~ [The Applicant has submitted an](#) application for an order granting development consent to reinforce the transmission network between the existing Bramford Substation in Suffolk, and Twinstead Tee in Essex. This would be achieved by the construction and operation of a new electricity transmission line over a distance of approximately 29km. The project meets the threshold as a NSIP, as defined under Part 3 of the Planning Act 2008, hence National Grid requires a DCO.

- 1.2.2 The reinforcement would comprise approximately 18km of overhead line (consisting of approximately 50 new pylons, and conductors) and 11km of underground cable system (with associated joint bays and above ground link pillars).
- 1.2.3 Four cable sealing end (CSE) compounds would be required to facilitate the transition between the overhead and underground cable technology. The CSE would be within a fenced compound, and contain electrical equipment, support structures, control building and a permanent access track.
- 1.2.4 Approximately 27km of existing overhead line and associated pylons would be removed as part of the proposals (25km of existing 132kV overhead line between Burstall Bridge and Twinstead Tee, and 2km of the existing 400kV overhead line to the south of Twinstead Tee). To facilitate the overhead line removal, a new grid supply point (GSP) substation is required at Butler's Wood, east of Wickham St Paul, in Essex. The GSP substation would include associated works, including replacement pylons, a single circuit sealing end compound and underground cables to tie the substation into the existing 400kV and 132kV networks.
- 1.2.5 Some aspects of the project, such as the underground cable sections and the GSP substation, constitute 'associated development' under the Planning Act 2008.
- 1.2.6 Other ancillary activities would be required to facilitate construction and operation of the project, including (but not limited to):
- Modifications to, and realignment of sections of existing overhead lines, including pylons;
 - Temporary land to facilitate construction activities including temporary amendments to the public highway, public rights of way, working areas for construction equipment and machinery, site offices, welfare, storage and access;
 - Temporary infrastructure to facilitate construction activities such as amendments to the highway, pylons and overhead line diversions, scaffolding to safeguard existing crossings and watercourse crossings;
 - Diversion of third-party assets and land drainage from the construction and operational footprint; and
 - Land required for mitigation, compensation and enhancement of the environment as a result of the environmental assessment process, and National Grid's commitments to Biodiversity Net Gain.

1.3 Project Programme

- 1.3.1 It is assumed that the GSP substation and the associated works would take approximately 18 months to construct and this would take place in advance of development consent being granted. The main overhead line/underground cable works are proposed to commence in mid-2024, starting with first site access and compound set up and then be completed in mid-2028. Reinstatement and landscape planting would then take place until mid-2029.

1.4 This Statement of Common Ground

1.4.1 For the purpose of this SoCG, National Grid ([the Applicant](#)) and East Anglia Three Limited will jointly be referred to as the 'Parties'. When referencing to East Anglia Three Limited alone, they will be referred to as 'the Consultee'.

1.4.2 Throughout the SoCG:

- Where a section begins 'Matters Agreed', this sets out matters that have been agreed between the Parties and where there is no dispute.
- Where a section begins 'Matters Not Agreed', this sets out matters that are not agreed between the Parties and where a difference of opinion remains.
- Where a section begins 'Matters Under Discussion', this sets out matters that are subject to further negotiation between the Parties.

1.4.3 This SoCG is structured as follows:

- Section 1 provides an introduction to this SoCG and a description of its purpose.
- Section 2 states the role of the Consultee in the DCO application process and details engagement undertaken between the Parties.
- Section 3 sets out matters agreed between the Parties.
- Section 4 sets out matters not agreed between the Parties.
- Section 5 sets out matters where agreement is currently outstanding between the Parties.
- Section 6 includes the signing off sheet.

1.4.4 It should be noted that this SoCG does not seek to agree the acceptability of the Consultee's development(s), but it will set out an approach as to how the Consultee's development(s) will be managed in the context of the project and the powers granted by the DCO, in respect to the Bramford to Twinstead reinforcement and the East Anglia Three project only.

1.4.5 This SoCG has been [updated submitted](#) at Examination Deadline [5 \(1 December 2023\)](#)⁴ and supersedes the version submitted in April 2023 at [the](#) application stage (Draft Statement of Common Ground TC East Anglia One OFTO Limited and East Anglia Three Limited [APP-174]) [and the version submitted at Deadline 1 \(Draft SoCG East Anglia Three Limited \[REP1-031\]\).](#)

2. Record of Engagement

2.1 Role of the Consultee in the Process

2.1.1 East Anglia Offshore Wind Limited was originally a joint venture owned equally by SPR (UK) Limited and Vattenfall Wind Power Ltd. East Anglia Offshore Wind Limited has a Zone Development Agreement with The Crown Estate to develop approximately 7.2 gigawatts (GW) of offshore wind projects off the coast of East Anglia. East Anglia Offshore Wind has renamed this Zone the East Anglia Zone.

2.1.2 However, the transmission assets of the East Anglia One Windfarm have been transferred to TC East Anglia One OFTO Limited, and TC East Anglia One OFTO Limited is now the Transmission Licence holder for these assets. Since the divestment of East Anglia One from SPR, [National Grid the Applicant](#) has been engaging with the new licence holder company.

2.2 East Anglia Three

2.2.1 The East Anglia Three project is the second project to be developed within the East Anglia Zone and comprises an offshore windfarm consisting of up to 100 offshore wind turbines and associated infrastructure, located approximately 69km from the Suffolk Coast. The East Anglia Three project includes an onshore cable route to transport energy to a convertor station in Bramford, adjacent to the existing [National Grid the Applicant](#) and East Anglia One's substations at Bramford Substation. A plan showing East Anglia Three's Order Limits within the proximity of Bramford Substation is contained at **Appendix 1**.

2.2.2 In respect to the East Anglia Three project, the high-level project timeline is summarised as follows:

- An application for development consent was submitted to the Planning Inspectorate in November 2015.
- On 28 March 2017 the Planning Inspectorate issued a report of recommendation to the SoS for BEIS. The SoS approved the application for consent on 7 August 2017.
- In June 2019 BEIS approved a non-material change to increase the overall capacity of the windfarm to 1,400MW.
- In April 2021 BEIS approved a second non-material change to reduce the number of offshore substations to one and to decrease the number of wind turbines and increase their hub height and rotor radius.
- In August 2021 a third non-material change was submitted to remove the maximum generating capacity of 1,400MW and to decrease the number of wind turbines and increase their height and rotor radius.
- Onshore construction began in July 2022 and is ongoing.

2.2.3 The East Anglia Three project is wholly owned by the Consultee (SPR) and remains the sole subject of this SoCG.

2.3 Project Interface

- 2.3.1 The project would contain and/or involve development works that relate to the removal/installation of overhead lines on/or in close proximity to elements of the Consultee's proposed and existing developments at Bramford near Bramford Substation, including the installation of new shunt reactors to maintain the electrical operating parameters of the 400kV network and gantry structures to connect the overhead line into the substation. This work would take place within the boundaries of [National Grid](#) [The Applicant](#)'s operational land.
- 2.3.2 The proposed 400kV overhead line would tie into the existing substation on the western boundary. This would require the realignment of the existing 400kV overhead line and a new angle pylon, near Hill Farm to connect into Bramford Substation. The existing 400kV overhead line to the north-east of Hill Farm would be removed (comprising three pylons and the intervening spans of conductors).
- 2.3.3 The following list provides details of the proposed development works, that would be required pursuant to the project and as detailed on Sheet 1 General Arrangement Plan (see **Appendix 2**). These works may interface with the Consultee's proposals in this location, as the works also fall within the Order Limits for the East Anglia Three project:
- The removal of a short section of the existing 400kV overhead line including two pylons 4YL002 and 4YL003;
 - Realignment of the existing 400kV line (removal of the section of line extending north-west from the substation (green line) and replacement of line extending to the south-west from Bramford (grey line);
 - Moving the existing 400kV overhead line (downleads and conductors) from the northern gantry;
 - Constructing the two 400kV overhead lines to both come into the two western gantries;
 - Switchgear; and
 - Shunt reactors on the southern line (one for each circuit, needed due to the underground cable section down the line).
- 2.3.4 The technical interface between the respective projects is currently being determined during on-going discussions. The interface chiefly comprises the removal of three spans of overhead line; the existing SuDs pond and it being a potential receptor for run off during demolition and construction; the proposed accesses including the access from Bullen Lane and East Anglia Three's access to the SuDs pond; works within the substation itself and the proposed cables between the converter station (East Anglia Three) to the existing National Grid substation.
- 2.3.5 [National Grid](#) [The Applicant](#) has also considered whether the proposed works at Bramford Substation pursuant to the project would likely impact on the proposed landscape planting north of Bramford Substation associated with the East Anglia Three Converter Station. This landscape planting is proposed as part of the East Anglia Three Order Requirements to mitigate landscape and visual impacts of the Converter Station. An interface plan showing the overlap of the Parties' projects is contained at **Appendix 3**.
- 2.3.6 However, it appears that the proposed landscape planting is contained to the north/north-west of the Order Limits for the project and there does not appear to be an interface between the Parties' projects, as demonstrated by the East Anglia Three approved landscaping proposals at **Appendix 4**.

2.4 Summary of Pre-Application Discussions

2.4.1 Table 2.1 summarises the consultation and engagement that has taken place between the Parties prior to submission of the application.

Table 2.1 – Pre-application discussions

Date	Subject	Discussion Points
21 March 2022	Written response to Statutory Consultation	The Consultee responded to National Gridthe Applicant 's Statutory Consultation in the capacity of both East Anglia One and East Anglia Three. The Consultee drew a distinction between East Anglia One & Three, identified their land interests and advised that the project (as proposed at the time) was likely to impact on the Consultee's existing planting implemented as part of East Anglia One's Order Requirements to mitigate landscape and visual impacts associated with the Converter Station. In addition, the Consultee requested that matters in respect to cumulative effects between the projects were fully considered in any cumulative effects assessment, including traffic and transport, landscape, ecology, water resources and noise. See written response at Appendix 5 .
14 April 2022	Consultee's Statutory Consultation feedback	Meeting between National Gridthe Applicant and the Consultee, focussed on the Consultee's Statutory Consultation feedback, particularly in respect to the implications of the Consultee's existing landscaping, SUDS pond, access, and cumulative effects. Issues discussed included whether a proposed construction compound to the south-west of the Consultee's converter station can be moved, and access routes rationalised.
20 June 2022	Introductions	Follow-up email from the National Gridthe Applicant Consents Officer to initiate further discussions of the relative projects with a view of progressing a SoCG.
10 August 2022	Project interface	Virtual meeting with the Consultee's Consents Compliance Managers and to follow up on introductory emails and discuss the relative projects with a view of progressing a SoCG.
23 August 2022	landscaping Discharge of Requirements, email from the Consultee	A follow up email from the meeting held on 10 August 2022, providing National Gridthe Applicant to a link in respect to the landscaping Discharge of Requirements in respect to East Anglia Three for the area around Bramford Substation.
29 September 2022	Landscape planting and the Targeted Consultation, email to the Consultee	Following the Consultee's feedback at Statutory Consultation, it was reported to the Consultee's Consents Compliance Managers that a number of changes to the proposals around Bramford Substation had been implemented to reduce the impact on the Consultee's landscape planting southwest of the East Anglia One's Substation. It was also advised that the targeted consultation was open for responses.
10 October 2022	Consultee's written response to Targeted Consultation	The Consultee responded to National Gridthe Applicant 's Targeted Consultation advising that they were pleased to see a number of changes implemented following the Statutory Consultation. In addition, the Consultee requested that matters in respect to cumulative effects between the projects were fully considered in any cumulative effects assessment, including traffic and transport, landscape, ecology, water resources and noise. The Consultee also

encouraged on-going discussions to inform any SoCG. See response contained at **Appendix 6**.

18 January 2023	Email from the Consultee's Head of Development to National Grid the Applicant's Consents Office	Email from the Consultee's Head Of Development advising that the Transmission Assets of The East Anglia One Windfarm have been transferred to TC East Anglia One OFTO Limited. As of this date TC East Anglia One OFTO Limited is the Transmission Licence holder for these assets.
20 January 2023	Draft SoCG	Email to Consultee with the Draft SoCG attached to initiate further discussions.

DCO SUBMISSION APRIL 2023

2.5 Summary of Post-Submission Discussions

Table 2.2 summarises the consultation and engagement that has taken place between the Parties post submission of the application.

Table 2.2 – Post-submission discussions

Date	Topic	Discussion Points
6 June 2023	Notification of Relevant Representation	of National Grid The Applicant wrote to the Consultee to inform them that the application for development consent had been accepted and that relevant representations could be submitted.
Published 24 July 2023 (on PINS website)	The Consultee's Relevant Representations	The Consultee submitted a Relevant Representation [RR-029] to the Planning Inspectorate identifying their interest in land within the Order Limits and suggesting that National Grid The Applicant undertakes a full cumulative effects assessment.
7 June 2023	Further discussions	SoCG Follow up meeting with the Consultee's Project Manager in respect to the East Anglia Three project only to progress the SoCG.
11 September 2023	Further discussions	SoCG Virtual meeting with the Consultee's Project Manager and Senior Project Manager where parties agreed to progress discussions in respect to the technical interface; share more information on construction programmes and proposed and existing assets; the Consultee to provide a land interest plan; parties to consider vegetation removal; National Grid The Applicant 's Land Agent to reach out to new contacts and the Consultee to provide an updated list of project contacts.
17 October 2023	Technical and Construction Interface	Technical interface discussion.
3 November 2023	Technical and Construction Interface	Continued technical interface discussions.
17 November 2023	Technical and Construction Interface and Next Steps.	Continued technical interface discussions and next steps, including agreement of provisions to be included in the draft Heads of Terms.
24 November 2023	Email Issuing Draft Heads of Terms	Email sent by the Applicant's solicitors to the Consultee's solicitors, with attached draft Heads of Terms to initiate further discussions and agreement.

3. Matters Agreed

3.1.1 The Parties agree the following:

- i. Pursuant to section 6A(5) of the Electricity Act 1989, the Consultee benefits from an electricity supply licence under section 6(1)(d) of the Electricity Act 1989.
- ii. The Consultee acknowledges the project description for the project as set out in Section 1.2 of this SoCG.
- iii. The Consultee has no objection to the principle of the project.
- iv. The Parties can see no reason why the project and East Anglia Three cannot be implemented and operated without conflict with one another.
- v. The Consultee agrees to provide a diagram and list of all their apparatus (existing or proposed) that is in the vicinity of the project and the Consultee agrees that it has identified and listed those parts of its network apparatus (existing or proposed) that are located within the vicinity of all that land that may be required for all the development works required under the terms of the project.

4. Matters Not Agreed

Table 4.1 – Matters not ~~A~~agreed

SoCG ID	Matter	The Consultee Position	National Grid The Applicant's Position
---------	--------	------------------------	---

Currently, no matters are not agreed between the Parties.

DRAFT

5. Matters Under Discussion

Table 5.1 – Matters under Discussion

SoCG ID	Matter	The Consultee Position	National Grid The Applicant Position
Technical Interface			
5.1.1	There is an interface between the project and the Consultee's proposed/existing assets	National Grid The Applicant and the Consultee remain in discussions in respect to the technical interface, with a view of agreeing a suitable interface agreement Interface Agreement.	National Grid The Applicant and the Consultee remain in discussions in respect to the technical interface, with a view of agreeing a suitable interface agreement Interface Agreement. In addition, the draft Development Consent Order [APP-034] includes (at Part 1 of Schedule 14) general protective provisions for the benefit of statutory undertakers.
Sharing of Information			
5.1.2	Sharing of information to inform the technical interface	Parties agreed to progress discussions in respect to the technical interface; share more information on construction programmes and proposed and existing assets; the Consultee to provide a land interest plan; parties to consider vegetation removal; National Grid the Applicant's Land Agent to reach out to new contacts and the Consultee to provide an updated list of project contacts.	Parties agreed to progress discussions in respect to the technical interface; share more information on construction programmes and proposed and existing assets; the Consultee to provide a land interest plan; parties to consider vegetation removal; National Grid the Applicant's Land Agent to reach out to new contacts and the Consultee to provide an updated list of project contacts.
5.1.3	Heads of Terms	N/A	The Applicant has issued the Consultee draft Heads of Terms in respect to the Interface Agreement on 24 November 2023. The Applicant is awaiting feedback on this draft.

6. Approvals

Signed

On Behalf of

Name

Position

Date

Signed

On Behalf of

Name

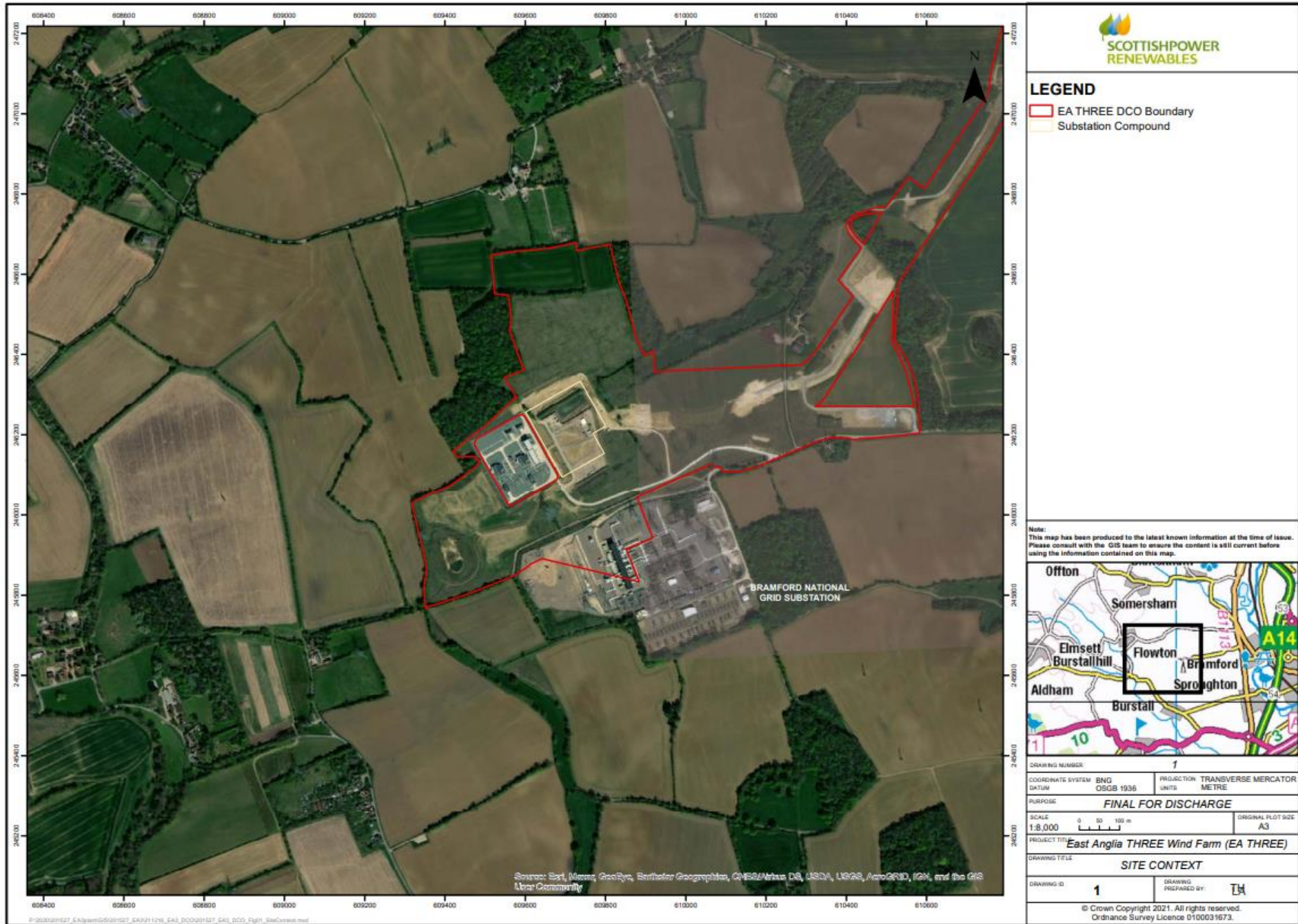
Position

Date

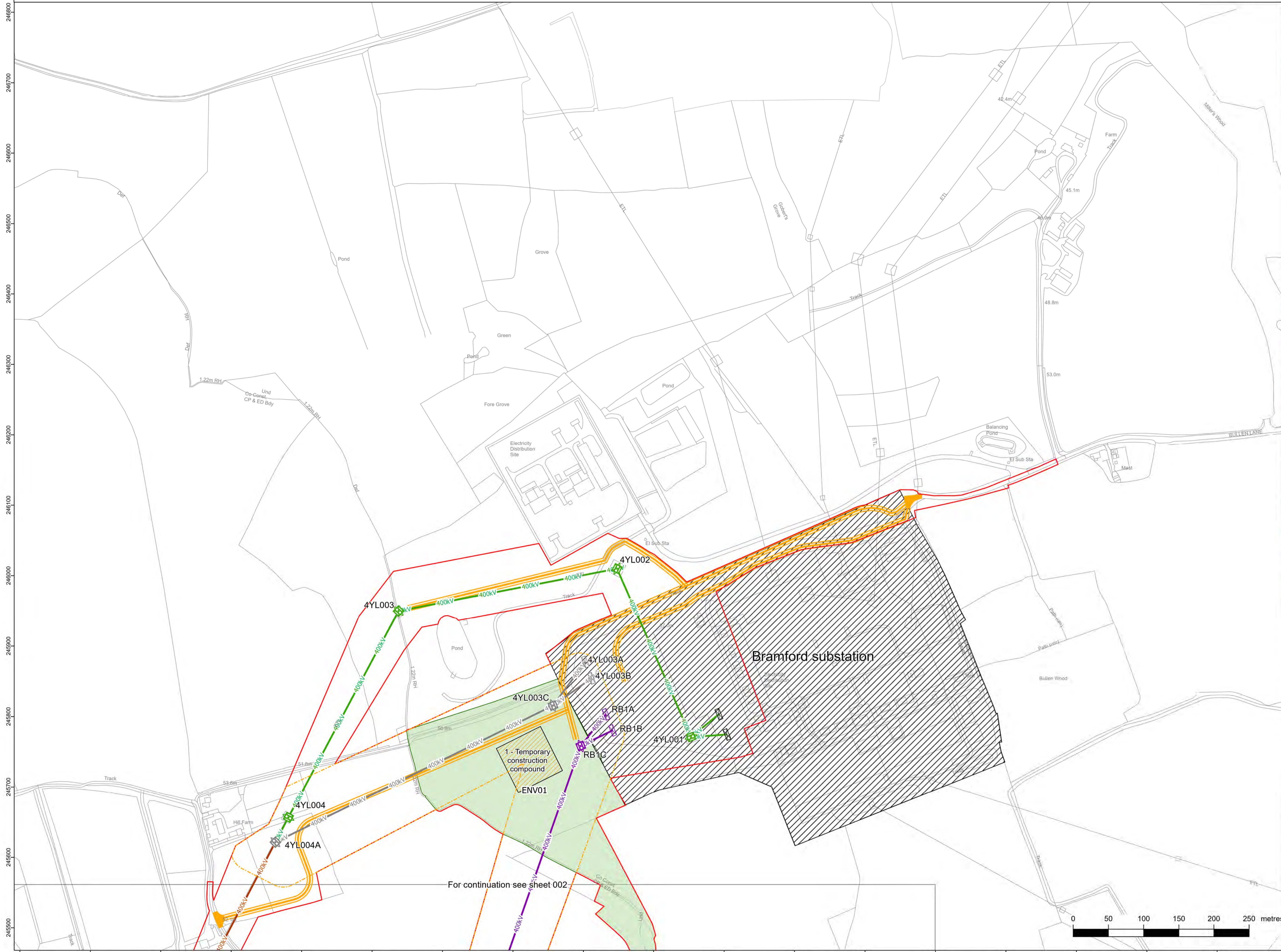
Reference List

Department for Communities and Local Government (2015) *Planning Act 2008: Guidance for the examination of applications for development consent*. March 2015 (Department for Communities and Local Government, 2015)

Appendix 1: The Consultee's Order Limits near Bramford Substation

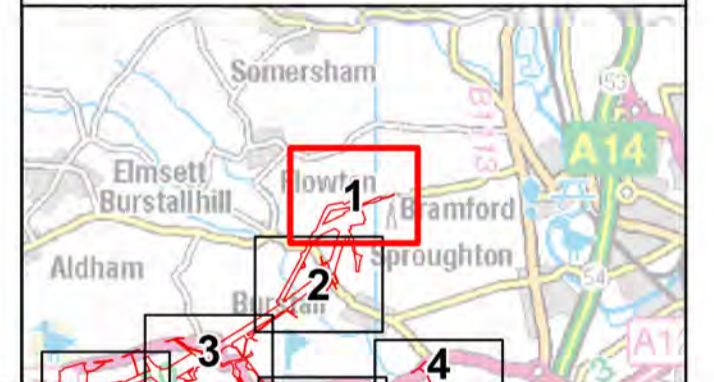


Appendix 2: The Project's Order Limits near Bramford Substation



Legend

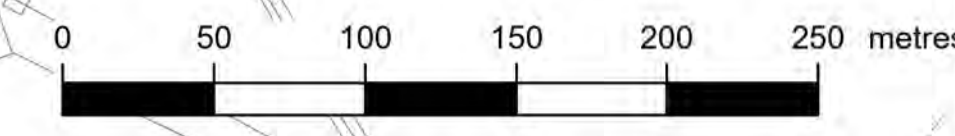
- RB Proposed 400kV overhead line
- 4YL Existing 400kV overhead line
- 4YLA Existing 400kV overhead line
- PCB Existing 132kV overhead line
- Order limits
- Limits of deviation: overhead Lines
- Limits of deviation: underground cable
- Limits of deviation: non-linear works
- Temporary pylon (not to scale)
- Proposed pylon (not to scale)
- Existing pylon (not to scale)
- Proposed pylon modification works (not to scale)
- Proposed pylon realignment (not to scale)
- Proposed pylon removal (not to scale)
- Existing gantry (not to scale)
- Proposed gantry realignment (not to scale)
- Proposed gantry (not to scale)
- Proposed cable sealing end platform tower (not to scale)
- Proposed cable sealing end platform tower modification (not to scale)
- 400kV Existing 400kV overhead line
- 400kV Proposed modification to 400kV overhead line
- 400kV Proposed realignment of existing 400kV overhead line
- 400kV Proposed removal of 400kV overhead line
- 400kV Proposed 400kV overhead line
- 132kV Existing 132kV overhead line
- 132kV Proposed modification of 132kV overhead line
- 132kV Proposed removal of 132kV overhead line
- 400kV Proposed 400kV underground cables
- 132kV Proposed 132kV underground cables
- 132kV Temporary 132kV overhead line diversion
- 400kV Temporary 400kV overhead line diversion
- Proposed trenchless 400kV underground cable installation working area
- Temporary access bridge
- Permanent access point
- Permanent access route
- Temporary access point
- Temporary access route
- Temporary construction compound
- Existing substation
- Proposed grid supply point substation (GSP)
- Cable sealing end compound
- Environmental area



Reference should be made to Document 2.1 Guide to the Plans which provides further information on what the plans show.

NG Investment No. 21847			
A	17/02/2023	Rev A for DCO application	NP DE RF
ISSUE	DATE	REMARKS	DRAWN/CHKD/APPD
PROJECT: Bramford to Twinstead Reinforcement			

nationalgrid	
Document 2.10 General Arrangement Plans	
TITLE:	
CIRCUIT / SITE: Bramford – Pelham & Bramford – Braintree – Bulls Lodge	
ORIGINATOR DRAWING NO. A1/ACC/21847/001	
NO. OF SHEETS 01	ISSUE A
SCALE: 1:2,500	



For continuation see sheet 002

Appendix 3: East Anglia Three and Bramford to Twinstead Interface

Appendix 4: East Anglia Three Approved Landscaping Proposals



SOFT LANDSCAPE LEGEND

- EA THREE DCO Boundary
- Existing Contours
- Proposed Contours
- Existing Vegetation to be retained
- Indicative areas of existing mature woodland
- Pylon
- Overhead powerlines
- Approximate underground cable alignment
- Proposed Planting**
- Txx Tree replanting location. See plant schedules for details.
- H1 Mixed native species hedge. See plant schedules for details.
- WM1 Core Woodland comprising generally slower growing mixed broadleaf species such as oak (See plant schedules for details)
- WM2 Edge woodland comprising generally lower growing mixed broadleaf species such as Rowan (See plant schedules for details)
- WM4 Wet woodland planting mix appropriate for SUDs detention basin area. (See plant schedules for details)
- R1 Supplementary / infill planting for gaps in existing hedgerows using WM2 tree/shrub mix or H1 hedgerow mix as specified
- G1 Amenity grass seed mix for embankments, verges and waste sides
- G2 Wetland areas grassland seed mix areas.
- G3 Species rich grassland seed mix areas.
- G6 Marginal aquatic planting for the margins around the permanent pond.
- G7 Marginal aquatics for the SUDs basin forebay and swale base areas
- Filter drain with grass cover and manhole access (Refer to engineers specification)
- Filter drain with exposed aggregate and manhole access (Refer to engineers specification)
- Filter drain within substation compound (Refer to engineers specification)
- P4: Reinforced grass road surface
Description: Geotex pre-grown reinforced grass road from Geoplastic Ltd.
- FOR INFORMATION ONLY:**
- EA1 Woodland. Woodland planting carried out as part of EA1 landscape works. For information only.
- Existing land use to be retained and managed as agricultural use in accordance with local landowners recommendations and guidance
- Proposed Fencing to New Woodland**
- F2: Fence
Description: Rabbit / deer protection fencing for new woodland.
- F3: Maintenance access gate
Description: 2m wide maintenance gate / height dependent upon adjacent fencing.

GENERAL NOTES TO BE READ IN CONJUNCTION WITH SPECIFICATION AND DRAWINGS:

SITE CLEARANCE GENERALLY
 General: Remove rubbish, concrete, metal, glass, decayed vegetation and contaminated topsoil.
 Stones: Remove those with any dimension exceeding 75 mm.
 Contamination: Remove material containing toxins, pathogens or other noxious substances harmful to plant, animal or human life.
 Vegetation: Clear scrub to ground level by fall mowing and remove arisings; retain and protect trees indicated on drawings.
 Large roots: Grub up and dispose of without undue disturbance of soil and adjacent areas.

WOODLAND PLANTING GENERALLY
 Preparation: Fall clear all vegetation from site to 100mm high. Remove all arisings. Cross-rip planting areas to 600mm deep to remove and break through clay pans.
 Bare root, transplanted whips, 60-80cm high. Local provenance where possible.
 Sizes: 1.5m centres or as indicated in Plant Schedules.
 Spacings: Double staggered row, 5 plants per linear metre.
 Planting: Deciduous trees and shrubs: Late October to late March. Conifers and evergreens: September/October or April/May.
 Planting: Notching: Make a vertical 'T' 1" or 1 1/2" inch.
 To accommodate full depth of roots. Plant tree, close notch with root collar at ground level and firm the soil.
 Planting density: As per plant schedule.
 Layout: Random groups of no less than 3 or more than 7 of the same species, ensuring that no three plants are aligned in any one direction.
 Protection: Allow for deer proof fence to surround areas woodland fencing to incorporate rabbit proof fencing. Fencing mesh to BS EN 10223-5:2012.
 75mm of well-composted bark mulch to be provided around tree base.
 Allow for 10 year maintenance and management as per management plan.
 Replacements: As required, commensurate species and sizes.

HEDGE PLANTING GENERALLY
 Preparation: Fall clear all vegetation from site to 100mm high. Remove all arisings. Cross-rip planting areas to 600mm deep to remove and break through clay pans.
 Bare root, transplanted whips, 90-120cm high. Local provenance where possible.
 Sizes: Double staggered row, 5 plants per linear metre.
 Spacings: Deciduous trees and shrubs: Late October to late March. Conifers and evergreens: September/October or April/May.
 Planting: Notching: Make a vertical 'T' 1" or 1 1/2" inch.
 To accommodate full depth of roots. Plant tree, close notch with root collar at ground level and firm the soil.
 Planting density: As per plant schedule.
 Layout: Random groups of no less than 3 or more than 7 of the same species, ensuring that no three plants are aligned in any one direction.
 Protection: Allow for deer proof fence to surround areas woodland fencing to incorporate rabbit proof fencing. Fencing mesh to BS EN 10223-5:2012.
 75mm of well-composted bark mulch to be provided around tree base.
 Allow for 10 year maintenance and management as per management plan.
 Replacements: As required, commensurate species and sizes.

PLANTS/ TREES - GENERAL
 Condition: Materially undamaged, sturdy, healthy and vigorous.
 Appearance: Of good shape and without elongated shoots.
 Hardiness: Grown in a suitable environment and hardened off.
 Health: Free from pests, diseases, discoloration, weeds and physiological disorders.
 Root system and condition: Balanced with branch system.
 Standard: The National Plant Specification.
 Species: True to name.
 Origin/ Provenance: Local provenance.
 Definition: Origin and Provenance have the meaning given in the National Plant Specification.

WOODLAND/HEDGE MAINTENANCE
 Watering: Only as necessary to prevent plants wilting.
 Loose plants: Re-plant surrounding soil, without compacting.
 Weed control: Cut down and remove weeds prior to setting seed in a 1 m diameter area around each tree/hedge. Vegetation except and coppice shoots to be retained. Cut within the plantation area.
 Height (maximum): 50 mm.
 Arisings: Leave between rows.
 control: Mechanical, chemical or mulching methods of vegetation control.
 Ditches and drains: Keep clear.

PROTECTION TO H1 HEDGE PLANTING AND WM WOODLAND PLANTING OUTSIDE FENCED AREAS
 Manufacturer: Acorn planting products or equal approved.
 Product reference: 1000-grassable sheetguard supplied with 1.2m x 25mm square stake.
 Type: Round.
 Material: Biodegradable plastic mesh.
 Size: 1.2 m high x 110 mm diameter.
 Colour: Green.
 Support: Single timber stake.
 General: Ensure that protection methods do not impede natural movement of trees or restrict growth.

ROOT BARRIERS
 Underground Proprietary vertically ribbed root barriers are to be installed to an appropriate depth where trees are located in proximity to hard landscape, existing or proposed utilities / services

NOTES

1. This drawing is to be read in conjunction with all other drawings and specifications.
2. Do not scale off this drawing. Written dimensions to be taken only.
3. Any discrepancies found between this drawing and other drawings and specifications in the construction documents must be referred to the Landscape Architect prior to work commencing.
4. This drawing must not be copied in whole or in part without prior written consent of Optimised Environments Ltd.

DRAWING INFORMATION BASED UPON

Emapsite: © Crown copyright and database rights 2019 Ordnance Survey 0100031673.
 OS OpenData: Contains OS data © Crown copyright and database right (2019).
 Google Earth: Please show the attribution statement shown on the Google map or image that you are using.
 Topographical Survey: Please reference surveyor's survey.

CDM INFORMATION

KEY PLAN

Issue	Revision	Initial	Date
03	Studs pond update	rt	19.04.2022
02	Studs pond update, eastern hedge line shown on plan.	rt	14.04.2022
01	SPK comments, Red line boundary	jd	24.01.2022

Issue	Revision	Initial	Date
03	Studs pond update	rt	19.04.2022
02	Studs pond update, eastern hedge line shown on plan.	rt	14.04.2022
01	SPK comments, Red line boundary	jd	24.01.2022



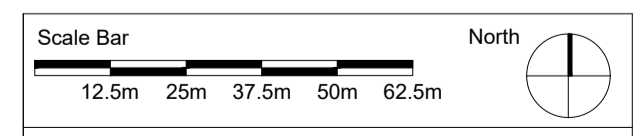
open optimised environments ltd
 EDINBURGH: 2nd Floor | Quartermile Two | 2 Lister Square | Edinburgh | EH3 9SL
 LONDON: 107-111 Fleet Street | London | EC4A 3AB
 MANCHESTER: 13 Swan Street | Manchester | M4 8LJ

Client: **ScottishPower Renewables**

Project: **East Anglia THREE Offshore Windfarm**

Drawing Title: **APPENDIX 02**

SOFT LANDSCAPE GENERAL ARRANGEMENT PLAN



Scale: 1:1250@A1 Date: DECEMBER 2021
 By: rt Status: For Information
 Checked: jd Approved: bp

Drawing Number: **EA3-OND-CNS-DRG-IBR-000003** Rev: **02**

Appendix 5: The Consultee's Response to Statutory Consultation



21st March 2022

To whom it may concern,

Response to the Bramford to Twinstead Reinforcement January 2022 consultation

This letter sets out jointly ScottishPower (UK) Limited's (SPR), East Anglia One Limited's (EAOL) and East Anglia Three Limited's (EATL) comments on the National Grid proposal to reinforce the electricity transmission network between the National Grid Bramford Substation and Twinstead Tee.

EAOL own and operate the East Anglia ONE offshore wind farm (EA1). EAOL is a joint venture between SPR and Bilbao Offshore Holding Limited (which is part of the Green Investment Group). EATL is wholly owned by SPR and is in the process of discharging Development Consent Order Requirements for the East Anglia THREE offshore wind farm (EA3). EA1 and EA3 are both Nationally Significant Infrastructure Projects for which development consent was granted, respectively, on 16 June 2014 pursuant to the East Anglia ONE Offshore Wind Farm Order 2014 (EA1 Order) and on 7 August 2017 pursuant to the East Anglia THREE Offshore Wind Farm Order 2017 (EA3 Order). The EA1 Order grants consent for electricity generation with an installed capacity of up to 750MW and the EA3 Order grants consent for electricity generation with an installed capacity of up to 1,400MW.

EAOL and EATL are statutory undertakers for the purposes of their respective projects and by virtue of Article 31 of the EA1 Order and Article 30 of the EA3 Order, the land within their Order Limits should be treated as operational land required in connection with their statutory undertaking. Proposed works in Section AB - Bramford Substation to Hintlesham - are located within the Order Limits of the onshore connection works for EA1 and EA3, namely the proposed removal of existing 400kV pylons and replacement with a new 400kV pylon at Bramford Substation. As such, EAOL and EATL have a significant interest as statutory undertakers whose operational land is affected.

SPR owns land adjacent to Bramford substation and is the grantee under deeds of grant of easement along the EA1 and EA3 onshore export cable corridor.

EAOL is also a tenant under a lease of part of the land owned by SPR adjacent to the Bramford substation and is entitled, as tenant, to exercise certain of the rights granted to SPR under deeds of grant of easement along the EA1 export cable corridor.

SPR, EAOL and EATL recognise the importance of the proposed reinforcement works, however it is imperative that the works do not compromise the construction and operation of EA3 or the operation of EA1, both of which will deliver substantial renewable energy benefits towards meeting the national need for renewable energy identified in the National Policy Statement for Renewable Energy (EN-3). There are a number of concerns for National Grid to consider, as described below.

Works within EA1 and EA3 Order limits

The proposed removal of two 400kV pylons and the construction of a new 400kV pylon at Bramford Substation, are within the EA1 and EA3 Order Limits, on land owned by SPR and also



on land leased to EAOL. It is imperative that the reinforcement works around Bramford Substation are designed to ensure there is no impact on any land required by EAOL or EATL to mitigate impacts of or operate the EA1 and EA3 projects. Access to the EA1 and EA3 substations by SPR, EAOL and EATL must also be maintained at all times during both the construction and operational phases of the proposed works.

Specifically, the proposed works at Bramford Substation will impact on landscape planting south-west of the EA1 Substation, which was implemented as part of the EA1 Order Requirements to mitigate landscape and visual impacts. Any landscape planting removed would need to be replaced and further discussions would also be required on the subsequent maintenance of any replacement planting over a ten-year period.

Similarly, the two temporary access tracks required for the removal of the two 400kV pylons would also require the removal of EA1 landscape planting. It is recommended these access tracks are rationalised and combined to reduce the impact on landscape planting.

Further consideration must also be given to the proposed location of the temporary construction compound south-west of the EA1 Substation. The location proposed would sever the existing access track, impacting on the EA1 access to the SuDS pond. The proposed location in proximity to the pond also creates a risk of additional run-off from the construction compound, risking increased siltation of the SuDS pond.

Proposed planting

In initial discussions with SPR, National Grid have explored potential opportunities to provide landscape planting as part of their own net gain requirements along the existing power line route, following the removal of the pylons near to the EA1 Substation. Further discussions would be required if this proposal were to be taken forward, particularly regarding types of planting proposed, details of who would undertake landscaping, land agreements to allow access and planting to take place, and what provision for the ongoing maintenance and replanting of any failed landscaping over an extended period would be made.

Additionally, further consideration is needed to ensure that any additional planting, replacement planting and/or loss of existing planting does not undermine the EA1/EA3 Landscape Master Plan requirements contained within the respective Orders and landscape management strategies. The loss of any planting resulting in a greater visibility of the respective EA1 and EA3 substations would not be acceptable in the first instance and will require coordination of an overall landscape master plan for all three schemes in cooperation with the appropriate Local Planning Authority. The requirement for any variation or consents as part of these works resulting for EA1/EA3 would be the responsibility of National Grid in consultation with EA1 and EA3 respectively.

Cumulative effects

Given the requirement to assess cumulative effects in paragraph 5(e) of Schedule 4 to the Town and Country Planning (Environmental Impact Assessment) Regulations 2017, we trust that a full cumulative environmental assessment with both the EA1 and EA3 projects will be undertaken but we would comment particularly on EA3 for reasons set out below.

As the proposed works are likely to coincide with the construction phase of EA3, we believe the following topics require consideration, some of which are already noted in the preliminary cumulative assessment in the PEIR:



- **Traffic and transport:** Cumulative impacts from construction traffic associated with the proposed works and the EA3 Converter Station and cable route should be assessed. Additionally, the impact on Public Rights of Way (PRoW) amenity along the bridleway at Bullen Lane, which coincides with the vehicular access along Bullen Lane, should be considered.
- **Landscape, ecology and water resources:** As noted above, there is the potential for cumulative impacts in relation to landscape, water resources and ecology. This is associated with the impacts on existing landscape planting around the EA1 and EA3 substations and on the SuDS pond. This could have subsequent impacts on local fauna, including Great Crested Newts in the SuDS pond.
- **Noise:** The potential noise impacts from concurrent construction activities should be considered in the assessment and mitigated accordingly. It should be noted that piling activities are expected at the EA3 Converter Station. Information on the number, type and timing of these works will become available in Quarter 3 of 2023.

SPR, EAOL and EATL recognise the importance of the proposed works and the contribution both projects have in meeting the national need for renewable energy. We are keen to continue working with National Grid to address the concerns raised in this letter, as well as supporting National Grid's identification of enhancement opportunities around the Bramford Substation.

SPR are committed to Mid Suffolk District Council's strategic cumulative group in the Bramford area and are happy to provide appropriate information on the EA1 and EA3 sites as required. It is requested that National Grid continues to liaise with us through your existing contact at ScottishPower Renewables, Philip Rew-Williamson (prew-williamson@scottishpower.com). Please do not hesitate to contact us for further discussion or information requests.

Yours Sincerely,

**Gareth
Mills** Digitally signed
by Gareth Mills
Date: 2022.03.21
14:49:20 Z

Gareth Mills
EA Hub Onshore Project Manager,
UK Offshore Development, ScottishPower Renewables

Appendix 6: The Consultee's Response to Targeted Consultation



10 October 2022

Return address:

Terence Epo

East Anglia Three Limited c/o ScottishPower
Renewables
320 St Vincent Street

Glasgow

G2 5AD

To whom it may concern,

Response to the Bramford to Twinstead Reinforcement September 2022 Targeted Consultation

This letter sets out East Anglia Three Limited's (EATL) comments on the updated National Grid proposal to reinforce the electricity transmission network between the National Grid Bramford Substation and Twinstead Tee.

EATL is wholly owned by ScottishPower Renewables and is in the process of discharging requirements for the East Anglia THREE offshore wind farm (EA3). EA3 is a Nationally Significant Infrastructure Project for which development consent was granted on 7 August 2017 pursuant to the East Anglia THREE Offshore Wind Farm Order 2017 (EA3 Order)..

By virtue of Article 30 of the EA3 Order, EATL is a statutory undertaker for the purposes of this project and the land within the Order Limits should be treated as operational land required in connection with its statutory undertaking. Proposed works in Section AB - Bramford Substation to Hintlesham - is located within the Order Limit of the onshore connection works for EA3, namely the proposed removal of existing 400kV pylons and replacement with a new 400kV pylon at Bramford Substation. As such, EATL have a significant interest as statutory undertaker whose operational land is affected.

EATL recognise the importance of the proposed reinforcement works, however it is imperative that the works do not compromise the construction and operation of EA3 which will deliver substantial renewable energy benefits towards meeting the national need for renewable energy identified in the National Policy Statement for Renewable Energy (EN-3).

Following on from our initial letter in response to the consultation in January 2022, alongside meetings between SPR and National Grid, the changes to the design at Bramford have been reviewed and it is appreciated that a number of our previous comments have been taken into consideration. Any outstanding comments are described below.

Works within EA3 Order limits

The proposed removal of two 400kV pylons and the construction of a new 400kV pylon at Bramford Substation, are within the EA3 Order Limits, on land owned by ScottishPower

Renewables. It is imperative that the reinforcement works around Bramford Substation are designed to ensure there is no impact on any EA3 land required to mitigate or operate the EA3 project. Access to the EA3 substation by EATL must also be maintained at all times during both the construction and operational phases of the proposed works.

Additionally, consideration is needed to ensure that any additional planting does not undermine the EA3 Landscape Master Plan requirements contained within the DCO and landscape management strategies. The requirement for any variation or consents as part of these works resulting for EA3 would be the responsibility of National Grid in consultation with EA3.

Cumulative effects

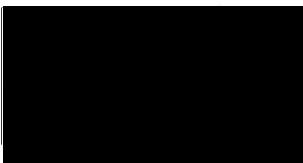
Given the requirement to assess cumulative effects in paragraph 5(e) of Schedule 4 to the Town and Country Planning (Environmental Impact Assessment) Regulations 2017, we trust that a full cumulative environmental assessment with the EA3 project will be undertaken. As the proposed works are likely to coincide with the construction phase of EA3, we believe the following topics require consideration, some of which are already noted in the preliminary cumulative assessment in the PEIR:

- **Traffic and transport:** Cumulative impacts from construction traffic associated with the proposed works and the EA3 Converter Station and cable route should be assessed. Additionally, the impact on Public Rights of Way (PRoW) amenity along the bridleway at Bullen Lane, which coincides with the vehicular access along Bullen Lane, should be considered.
- **Landscape, ecology and water resources:** There is the potential for cumulative impacts in relation to landscape, water resources and ecology. This is associated with the potential for impacts on existing landscape planting around the EA3 substations and on the SuDS pond due to the proximity of the works. This could have subsequent impacts on local fauna, including Great Crested Newts in the SuDS pond.
- **Noise:** The potential noise impacts from concurrent construction activities should be considered in the assessment and mitigated accordingly. It should be noted that piling activities are expected at the EA3 Converter Station. Information on the number, type and timing of these works will become available in Q3 of 2023.

SPR recognises the importance of the proposed works and the contribution both projects have in meeting the national need for renewable energy. We are keen to continue working with National Grid and welcome further meetings to discuss the issues noted above and any other items, including if National Grid would still like to arrange a Statement of Common Ground following these design updates.

SPR are committed to Mid Suffolk District Council's strategic cumulative group in the Bramford area and are happy to provide appropriate information on the EA3 site as required. It is requested that National Grid liaise with us through Terence Epo, (tepo@scottishpower.com). Please do not hesitate to contact us for further discussion or information requests.

Yours Sincerely,





Terence Epo

Project Manager, Consent Compliance,
UK Offshore Development, ScottishPower Renewables

Page intentionally blank

National Grid plc
National Grid House,
Warwick Technology Park,
Gallows Hill, Warwick.
CV34 6DA United Kingdom

Registered in England and Wales
No. 4031152
nationalgrid.com